

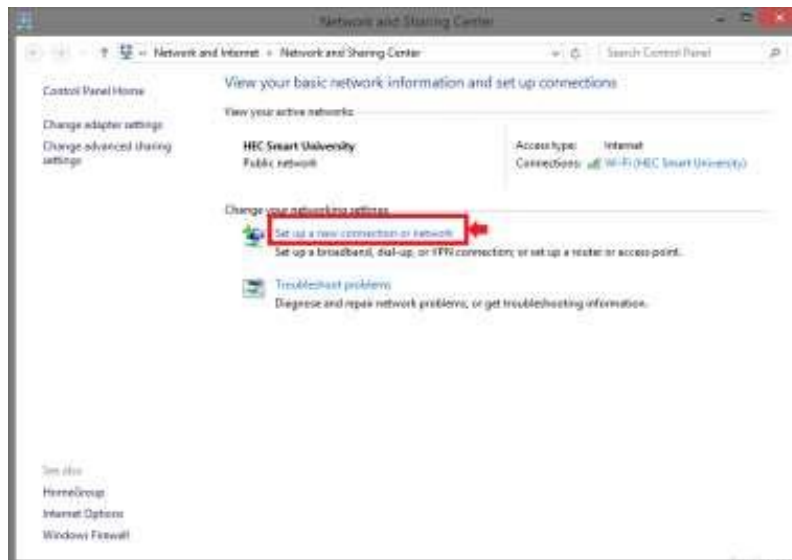


# Windows 8.1 Configuration of QUEST Smart University Connectivity Manual

## 1. Open 'Network and Sharing Center'

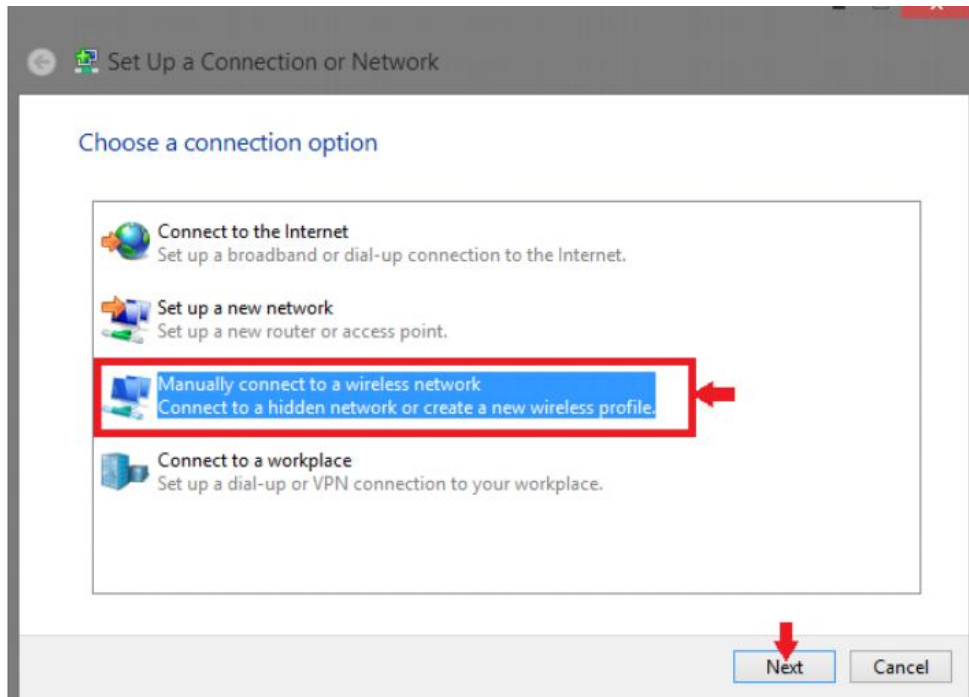


## 2. Go to 'Set up a new connection or network'





### 3. Choose 'Manually connect to a wireless network'



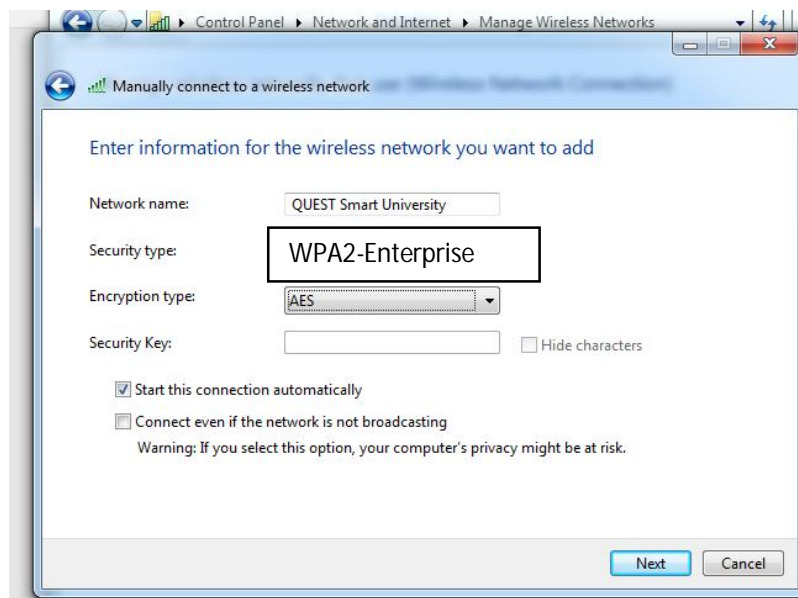
### 4. On network name write "QUEST Smart University"

Security type 'WPA2-Enterprise'

Encryption Type 'AES'

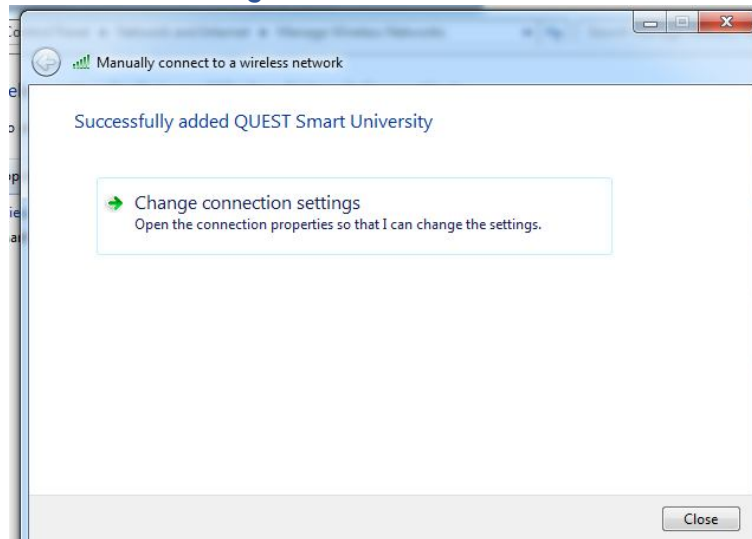
Leave Security Key 'Blank'

Click on 'Next'





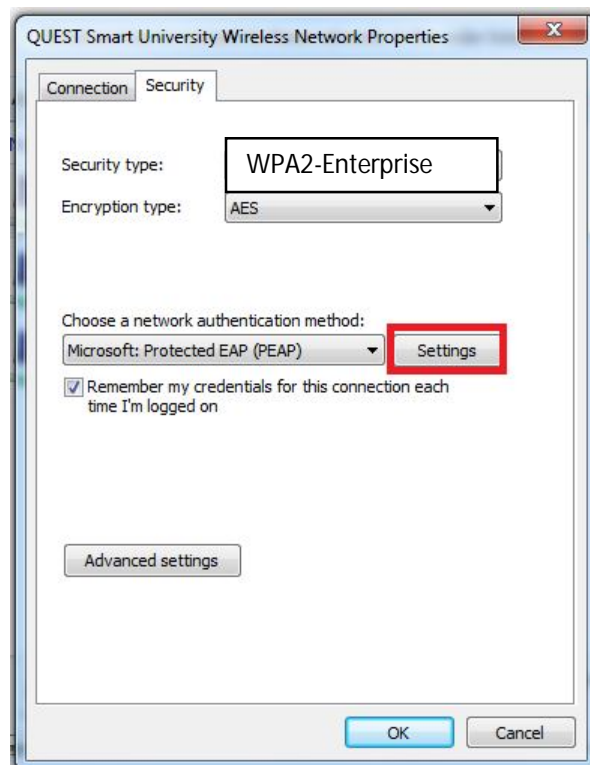
### 5. Go to 'Change Connection Setting'



### 6. Select Security Type 'WPA2-Enterprise'

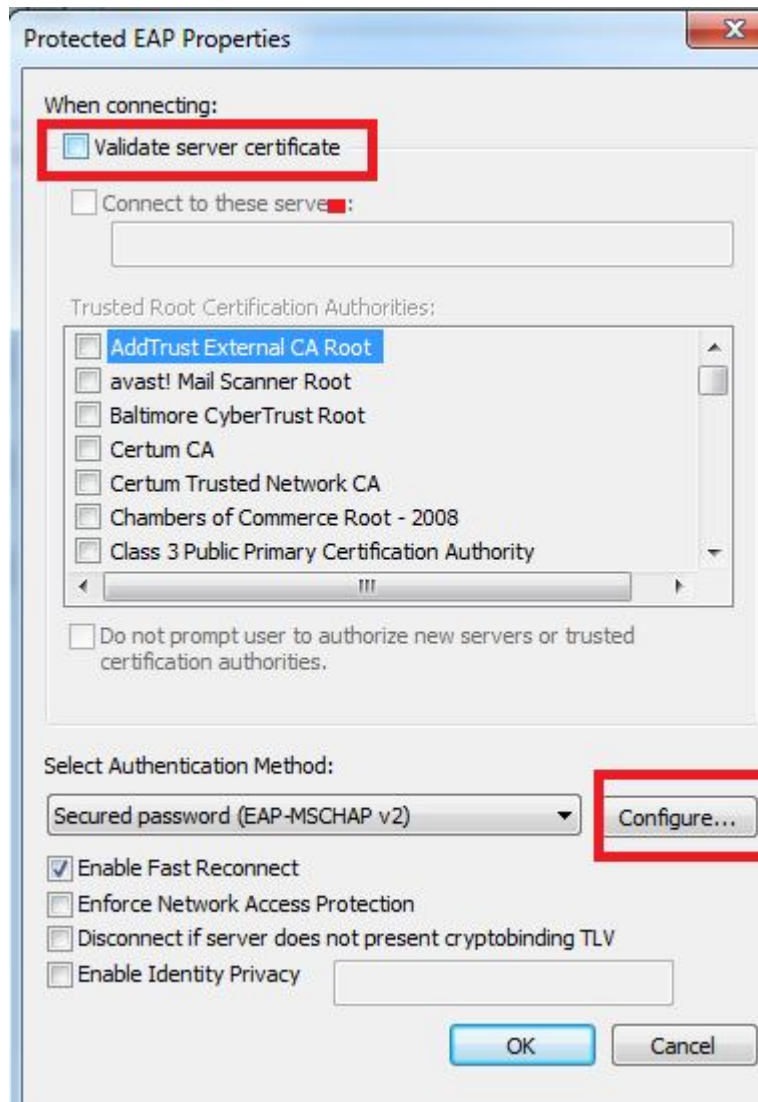
Encryption Type 'AES'

Network Authentication Method: Microsoft: Protected EAP (PEAP) and then click setting





**7. Uncheck 'Validate server certificate'**  
Click on 'Configure'



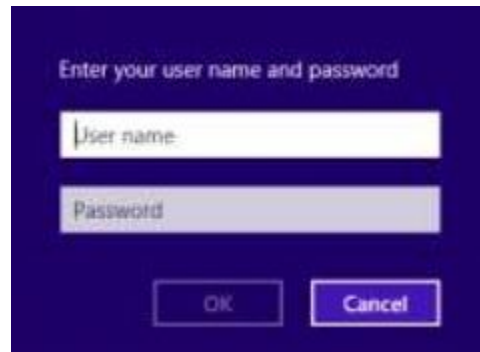
**8. Uncheck Automatically use my windows logon name and password (and domain if any) press OK**





## 9. Forget / Disconnect or Reconnect with QUEST Smart University

## 10. Provide Your Institutional Username and Password

A screenshot of a Windows-style login dialog box. The dialog has a dark blue background. At the top, it says "Enter your user name and password". Below this, there are two text input fields: the first is labeled "User name:" and the second is labeled "Password". At the bottom of the dialog, there are two buttons: "OK" and "Cancel".